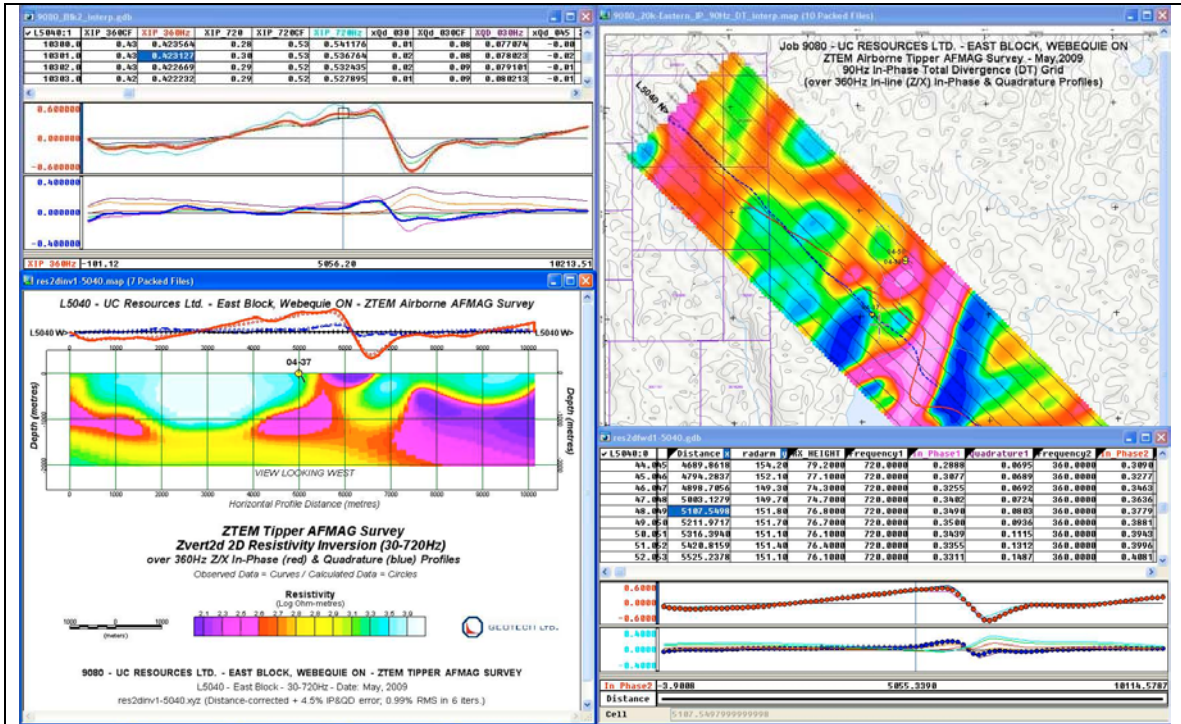


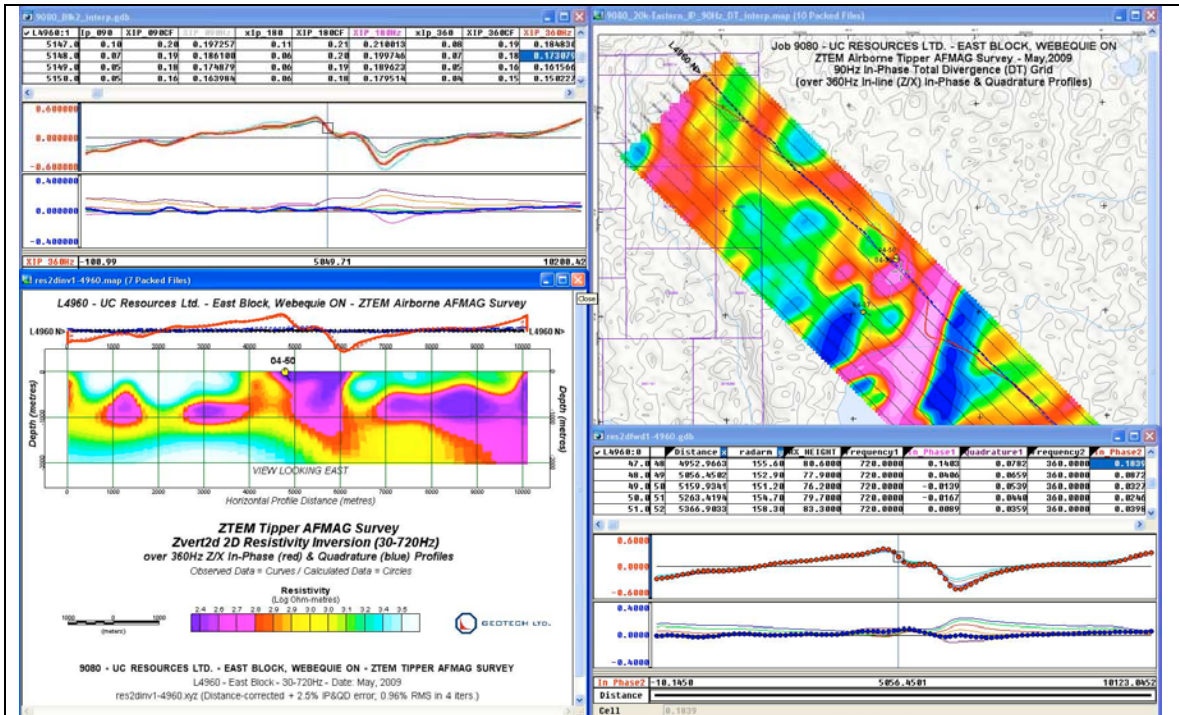
## 2.2 McFaulds 5



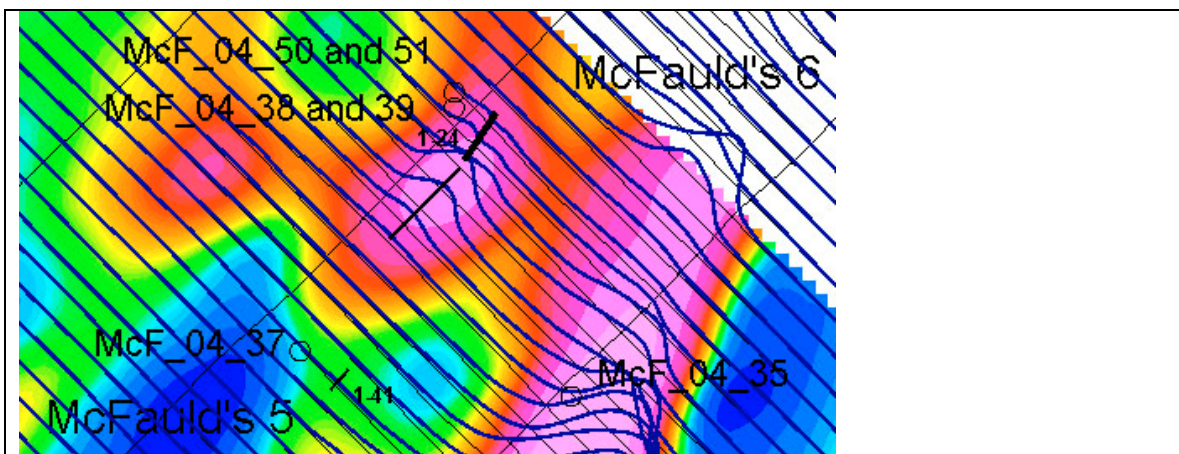
**McFaulds 5: ZTEM line 5040** This line passes just to the southwest of DDH McF\_04\_37. The ZTEM inversion section does not indicate an anomaly associated with McFaulds 5 and the drill hole but it does emphasize a prominent shallow conductive zone to the southeast which correlates with the clay bed drilled in hole McF\_04\_05.

In the profile detail there are some low amplitude wiggles that do not appear to be part of the inverted solution. Note that above the modelled cross section the profile that matches the inversion is shown as circles while the measured profile is shown as a solid line.

## 2.3 McFaulds 6

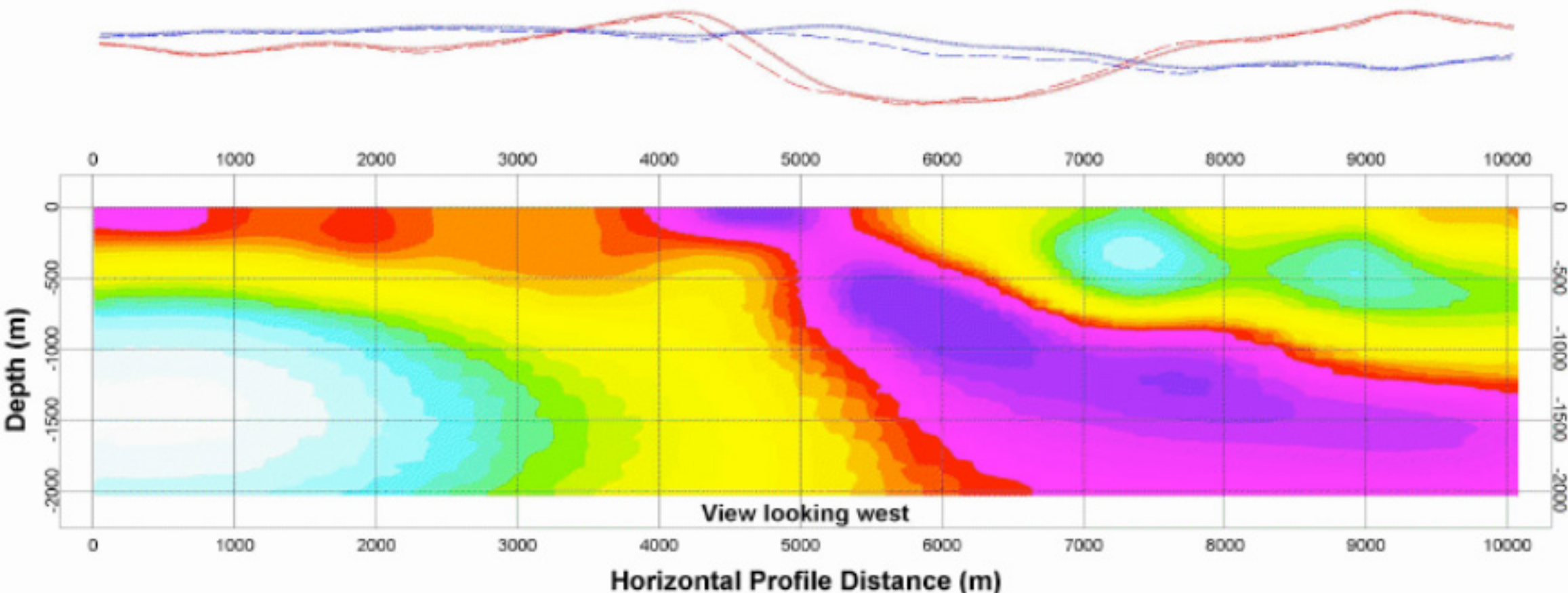


**McFaulds 6: ZTEM line 4960** This line passes about 100 m. to the southwest of DDH McF\_04\_38/39/50/51. The ZTEM inversion section does indicate an anomaly associated with McFaulds 6 and the drill hole. It appears as a side-lobe to a more prominent shallow conductive zone to the southeast that is coincident with the clay zone, identified in hole McF\_04\_35.

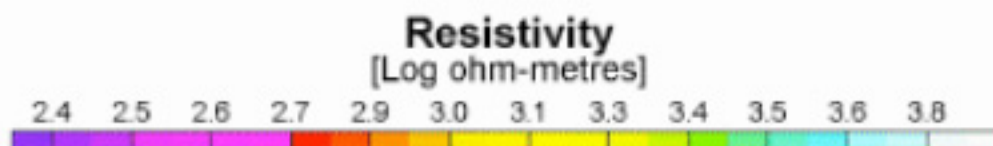
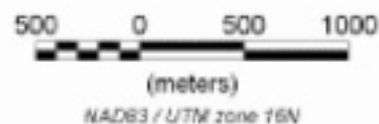


**East Block:** The colour background is the ZTEM IP-90 Hz DT grid, the same as illustrated in the ZTEM composite illustrations provided by Geotech. It is interesting to note that the ZTEM anomaly associated with McFaulds 6 and McF\_04\_38/39/50/51 is coincident with the AeroTem response that extends southwest from the 1-24 conductor, not the primary I-24 target that was drilled.

# Line 4090 - UC Resources Ltd. - West Block, Webequie, ON - ZTEM Airborne AFMAG Survey



**ZTEM Tipper AFMAG Survey**  
**Zvert2d 2D Resistivity Inversion (30-720Hz)**  
**over 360Hz Z/X In-Phase (red) & Quadrature (blue) profiles**  
Observed data = curves / Calculated data = circles



Project 9080 - Line 4090, flown on May 23rd, 2009 - West Block, Webequie, ON